



AQUACULTURE: THE EMERGING INDUSTRY



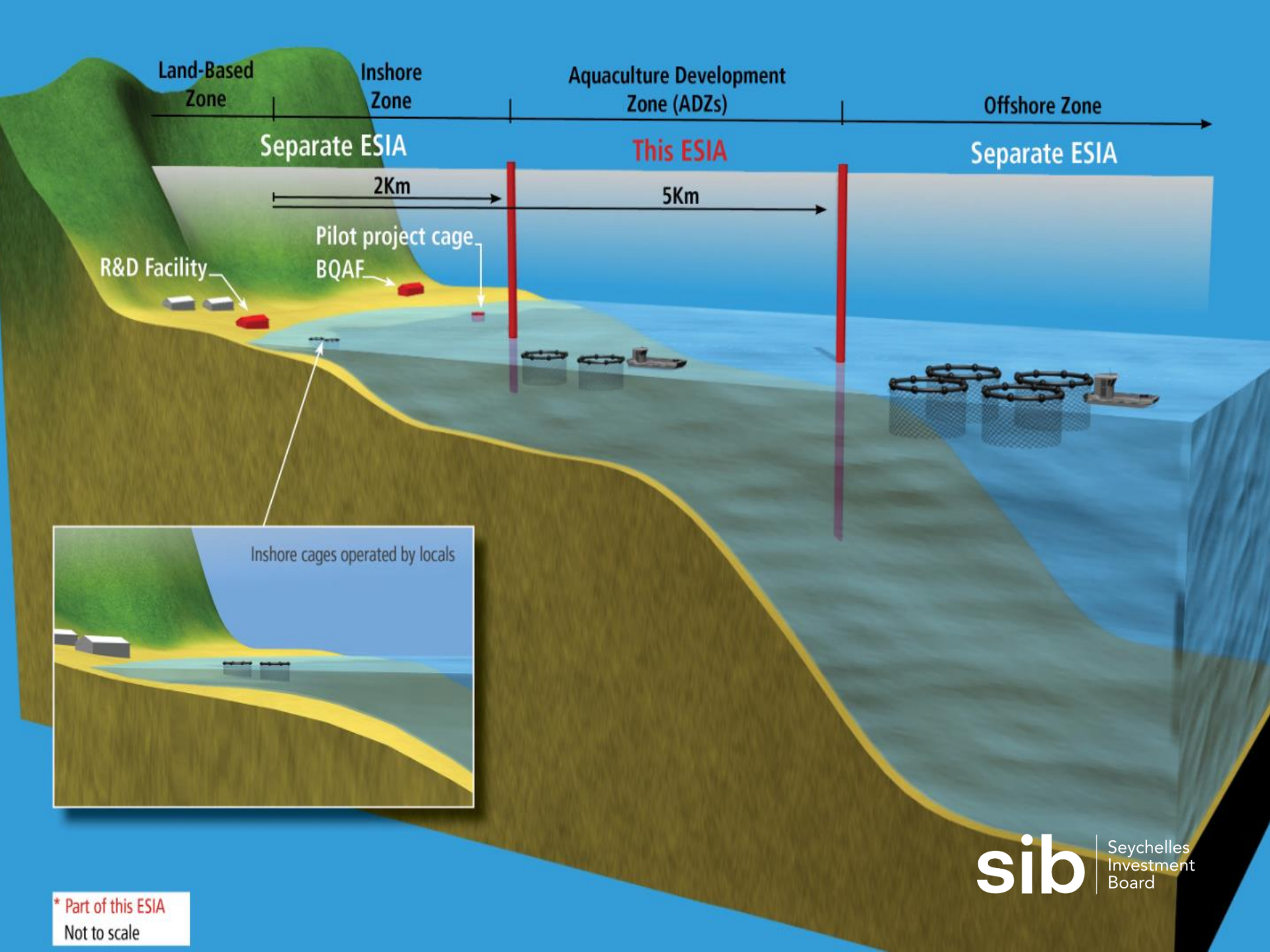
WHY?

WHY AQUACULTURE IN SEYCHELLES

- An EEZ of 1.3 million sq km, offering extensive area for growth
- The Mahé Plateau yields, mild wave action, moderate current & stable conditions, ideal for aquaculture
- Superior fish quality
- Sea and air connectivity from all over the world
- Favourable time zone (GMT + 4)
- Government policies supporting both domestic and foreign investment
- Stable political environment
- Geographically safe location (outside cyclone belt)
- Work permit easily available (foreign workers)
- Skilled labor force fluent in English, French and Creole
- No foreign exchange restrictions
- Potential total aquaculture production (MT) for Seychelles by 2042 = 66,000 MT production (Grouper, snapper, sea urchins, pearls, ornamentals, crabs)
- Potential Gross value of aquaculture production for Seychelles by 2042 = US\$ 414 million



WHERE?



Land-Based
Zone

Inshore
Zone

Aquaculture Development
Zone (ADZs)

Offshore Zone

Separate ESIA

This ESIA

Separate ESIA

2Km

5Km

R&D Facility

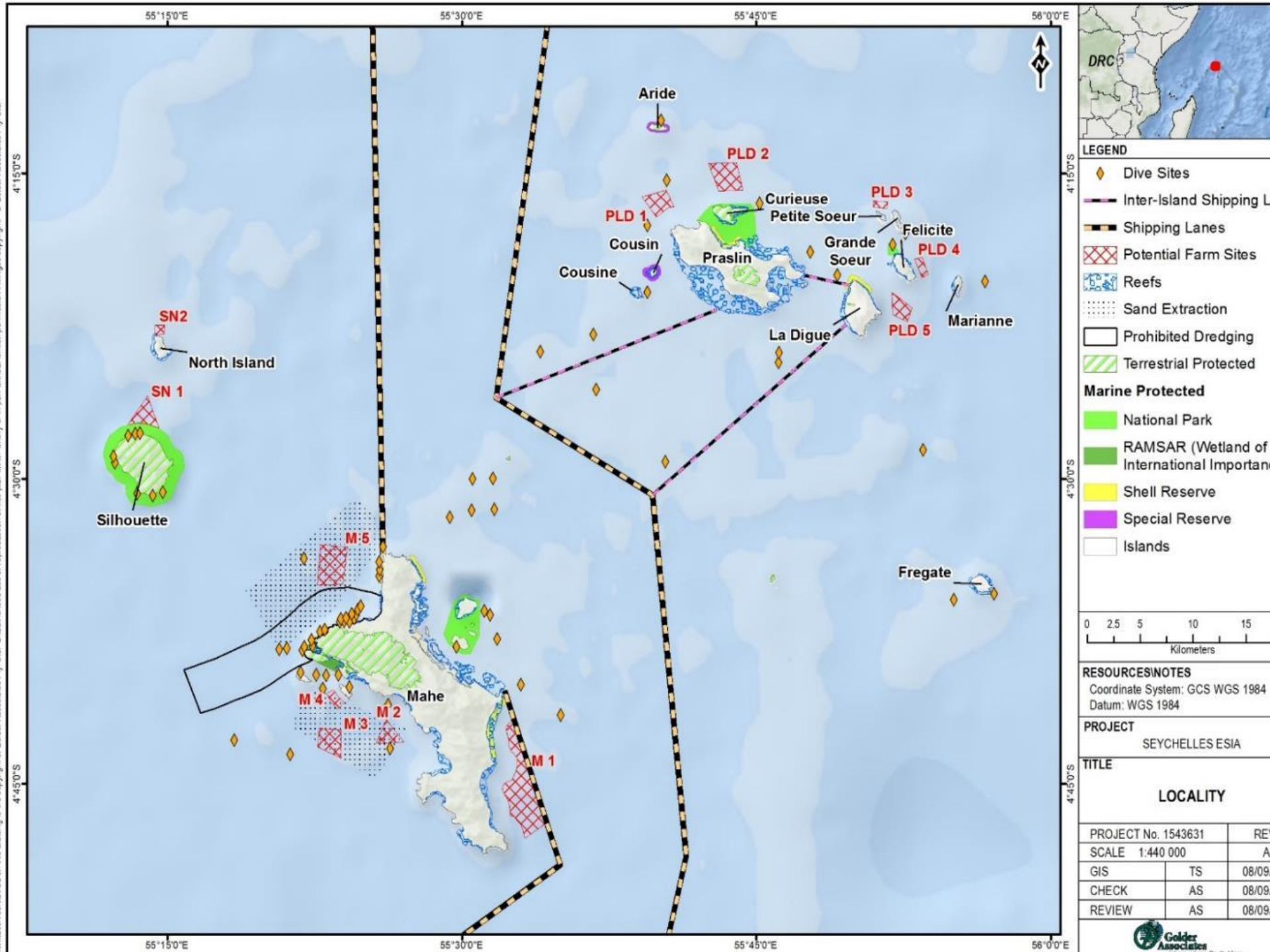
Pilot project cage
BQAF

Inshore cages operated by locals

* Part of this ESIA
Not to scale

sib

Seychelles
Investment
Board



Legend

Candidate species

-  Finfish
-  Ornamental fish
-  Sea cucumbers
-  Sea urchin
-  Mud crabs
-  Corals
-  Prawns
-  Pearl oysters
-  Broodstock Acclimation Facility

 Finfish Aquaculture Development Zone



A large, deep blue aquarium tank is filled with numerous fish of various species, including several large, silver, disc-shaped fish. The tank is densely populated with many vertical strings of dark, branching coral hanging from the top. Sunlight rays filter down from the top, creating a bright, shimmering effect on the water and coral. The word "WHAT?" is superimposed in the center of the image.

WHAT?

A large Brown Marbled Grouper is the central focus, swimming horizontally towards the left. Its body is covered in a complex pattern of dark brown and black spots and blotches over a lighter, mottled background. The fish has a prominent eye and a slightly open mouth. In the background, the deep blue water of the ocean is visible, with a few smaller, darker fish swimming in the distance. The foreground shows a portion of a coral reef with various brown and tan coral structures.

BROWN MARBLED GROUPE

CORAL FARMING



A close-up photograph of an open black-lipped pearl oyster. The interior of the shell is a deep, iridescent blue. Inside the shell, a cluster of approximately 15-20 pearls is visible. The pearls are mostly dark, with shades of deep blue, black, and dark green, and they have a high, glossy luster. One pearl in the lower center is lighter, appearing as a pale cream or light grey. The oyster is resting on a dark, textured surface, possibly a wooden table. The background is a blurred view of the ocean with blue and white waves.

BLACK LIPPED PEARL OYSTER

SEA URCHIN



A close-up photograph of a mud crab, likely a coconut crab, with its large claws bound by green rubber bands. The crab's carapace is dark and textured, and its legs are visible in the background. The text "MUD CRABS" is overlaid in white capital letters.

MUD CRABS

SANDFISH





EMPEROR RED SNAPPER



HUMPHEAD WRASSE

ORNAMENTAL FISH



Potato Bass



Snubnose Pompano



White Teat Fish



Malabar Grouper



Mangrove snapper



Golden Sandfish



Giant Grouper



Humphead Snapper



Cobia



Greasy Grouper



Goldlined Seabream

SPECIES BY ZONES

Aquaculture Zones	Distance	Annual Output	Species
Land-Based	On-Shore	No limit	Ornamental Finfish, Sea Urchin, Sea Cucumber, Pearl Oyster, Coral
Inshore	0 km -2 km	0-1000 MT	Pearl Oyster, Coral, Finfish (Grouper, Snapper...etc)
ADZ	2 km -5 km	1000 MT – 3000MT	Finfish (Grouper, Snapper...etc)
Off-Shore	5 km +	3000 MT +	Finfish (Grouper, Snapper...etc)



WHEN?

NEXT STEPS

Aquaculture Activity	Zone	No. of licenses	Investors	Estimated application launch date
Restorative Aquaculture Licenses	Inshore/Land	4	Local	April 2019
			Foreign	
Ornamental fish	Land	5	Local	April 2019
			Foreign	
Sea Urchin farming	Land	5	Local	July 2019
			Foreign	
Finfish cage farming offshore (including own hatchery)	Offshore+ADZ	5	Local	July 2020
			Foreign	
Finfish cage farming ADZs (including own hatchery)	ADZ sites number: M2, M5, PLD2	10	Local	July 2020
			Foreign	
Finfish cage farming ADZs (including own hatchery)	ADZ sites number: M3, M4, PLD1	6	Local	July 2021
			Foreign	
Finfish cage farming ADZs (including own hatchery)	ADZ sites number: Remainder of ADZs	10	Local	July 2022
			Foreign	
Total number of licenses		45		

POLICY – MAIN POINTS

- No importation and farming of exotic species
- No antibiotics allowed
- Strong anti pollution measures
- Minimal Visual Pollution
- Main target of aquaculture products is exports out of Seychelles
- Creation of jobs is not the main driver of developing the sector (aim for mechanization and innovation in intensified high-tech aquaculture)



THANK YOU